

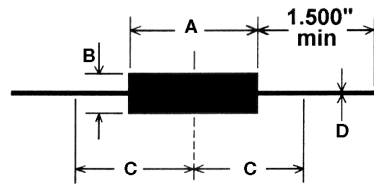


## Low Ohm Power Resistors

- ✓ Ideal for Current Sensing Applications
- ✓ Superior Thermal Shock and Moisture Resistance
- ✓ Low Inductance: Typically 7nH
- ✓ Resistance from 0.003 to 0.3
- ✓ Standard Resistance Tolerance to  $\pm 1\%$

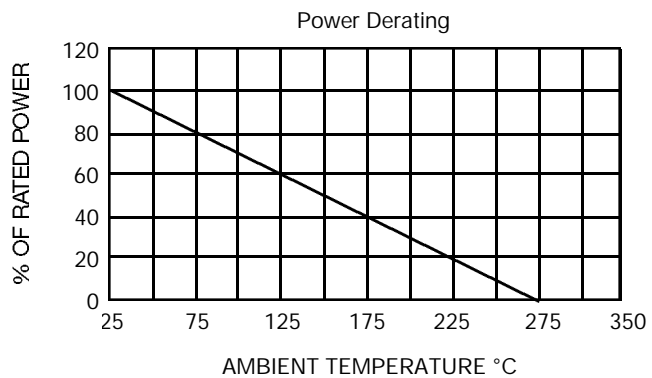
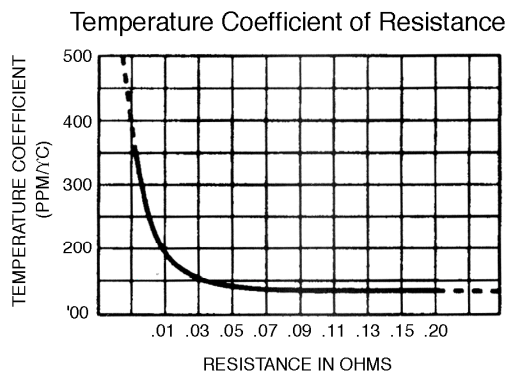
RGA's Lo-Ohm resistors are ideal for current sensing applications in test instruments, power amplifiers, and switching and linear power supplies. These resistors are transfer-molded in a high temperature resin, providing a high power dissipation to size characteristic. This construction also provides superior thermal shock and moisture resistance. The encapsulation will not peel, flake or deteriorate with commonly used cleaning solvents including Freon, and aqueous cleaning. Custom designs are available for special applications.

Type	Watt	A $\pm$ .020	B $\pm$ .020	C $\pm$ .020	D
RL1A	1	0.430	0.120	0.590	0.025
RL2B	3	0.580	0.200	0.665	0.032
RL2C	3	0.500	0.250	0.625	0.032
RL3	4	0.600	0.250	0.675	0.032
RL4	4.5	0.750	0.250	0.750	0.040
RL5	5	0.890	0.335	0.820	0.040
RL6	6	1.055	0.395	0.903	0.040
RL10	10	1.925	0.475	1.338	0.040



**Terminal Strength:** 10 lb pull test  
**Solderability:** Per MIL-STD-202 Method 208

Resistance Range: 0.003 to 0.3 . Consult factory for resistance values outside this range.  
 Standard Resistance Tol:  $\pm 1\%$ ,  $\pm 2\%$ ,  $\pm 3\%$ ,  $\pm 5\%$ . Tighter tolerances available  
 Dielectric Strength: 1000 VAC (except 500 VAC)  
 Insulation Resistance: 10,000 Megohms (dry)  
 Short Time Overload: 5 seconds @ 5 times rated power  
 Inductance: 7nH (typical for resistances of 0.055 to 0.1 )



See Page K11 for Part Numbering System.



# Current Sensing Wirewound Resistors

## Low-Ohm Ceramic Encased Resistor

Part No.	Power @ 25°C	Max. Current	A	B	C	D ±1/8	ød	E
RWL2	2 watts	10 amps	0.688	0.250	0.250	.35	.032	1.375
RWL3	3 watts	10 amps	0.875	0.312	0.312	.5	.032	1.375
RWL5	5 watts	20 amps	0.875	0.375	0.375	.5	.032	1.375
RWL7	6 watts	20 amps	1.375	0.375	0.375	1.0	.032	1.375
RWL10	10 watts	20 amps	1.875	0.375	0.375	1.5	.032	1.375
RWL15	15 watts	20 amps	1.875	0.500	0.500	1.5	.032	1.375
RWL22	22 watts	20 amps	2.500	0.500	0.500	2.0	.032	1.375

Resistance: 0.01Ω to 1Ω (down to 0.005Ω in many cases)

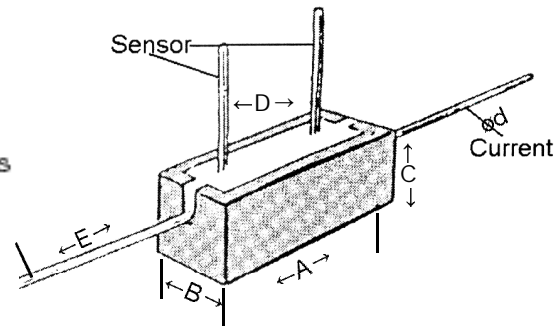
Four terminal construction for current sensing applications

All welded construction

Standard Tolerance: ±5%, available to ±0.5% in some cases

Flameproof

Lead diameter: 0.032"



### Part Numbering System

